

## case study - weed management

## Charlton Environmental

### How it started

Responsible for controlling and treating of invasive weeds around public areas such as street pavements, kerbs, central reservations, subways, shopping centres and parks, Charlton Environmental recognised the need for a streamlined approach to mapping and recording inspection and treatment activities. Given the varied nature and expansive scope of their operations, the need for efficiency and precision was paramount. So, Charlton Environmental worked with map16 to craft a comprehensive solution that could facilitate accurate mapping of weed infestations and enable seamless documentation and tracking of inspection and treatment records.

### The solution

map16 designed a system to do just this, tailored precisely to Charlton Environmental's needs. Ground crews engaged in weed spraying operations now have the capability to send maintenance data directly to the inspection management platform in real-time, live from the field. This data feed populates a bespoke crafted service dashboard, providing users with instant access to metrics such as the total quantities of chemicals used and the number of sites completed. An interactive map view dashboard was also built, providing comprehensive insights into inspection outcomes, treatment efficacy, and compliance status.

### The benefits

Through the implementation of a fully electronic data collection system, Charlton Environmental are now able to ensure their inspection and spraying data remains consistently up to date and accurate. This upgrade in efficiency prioritises public safety by facilitating timely and informed decision-making and elevates workforce productivity and efficiency. By seamlessly integrating digital data collection into their workflows, Charlton Environmental empowers their teams to operate with enhanced precision, optimising resource utilisation and minimizing potential risks.

**"The support from the team at map16 and their understanding of the requirement have been unparalleled."**

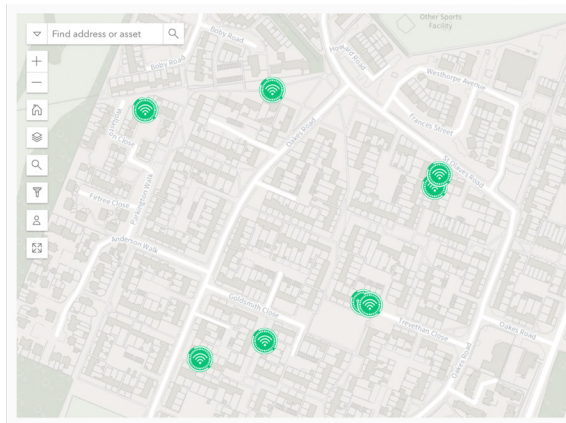
Stephen John  
Director, Charlton Environmental



## In the field

Whereas previously all data collected on site was manually entered through multiple, time consuming systems, the map16 inspection forms now auto-populate at lot of data, meaning the engineer's primary function is doing the inspection works, not completing paperwork. Crews can now also massively improve health and safety validity with photo uploads directly into the relevant forms, proving they've done essential tests, and showing works have been completed to the standard expected.

Crews are able to increase efficiency when in the field as the system allows Anglian Water to identify jobs within a close vicinity to each other, and can complete multiple jobs during one visit, saving the company time and money. Full inspections are carried out, including CCTV works, jetting and the installation of a monitor as a proactive approach to ensure the network is running smoothly.

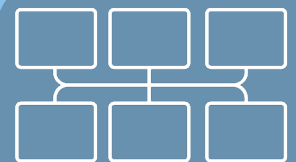


**127,000**  
metres of unknown  
sewer found and  
inspected



Achieved twice the  
amount of works  
within budget

**1,629**  
previously unknown  
blockages discovered



6 systems in 1